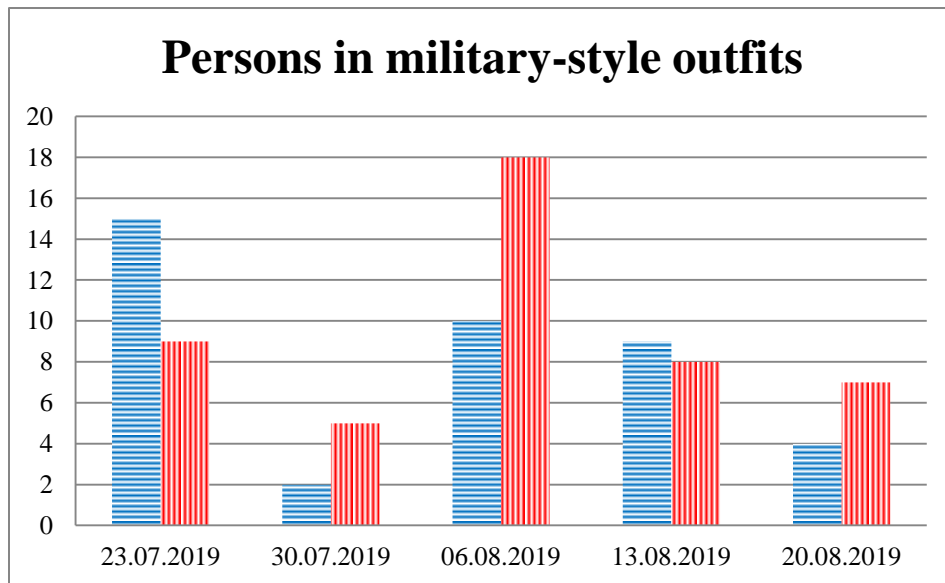
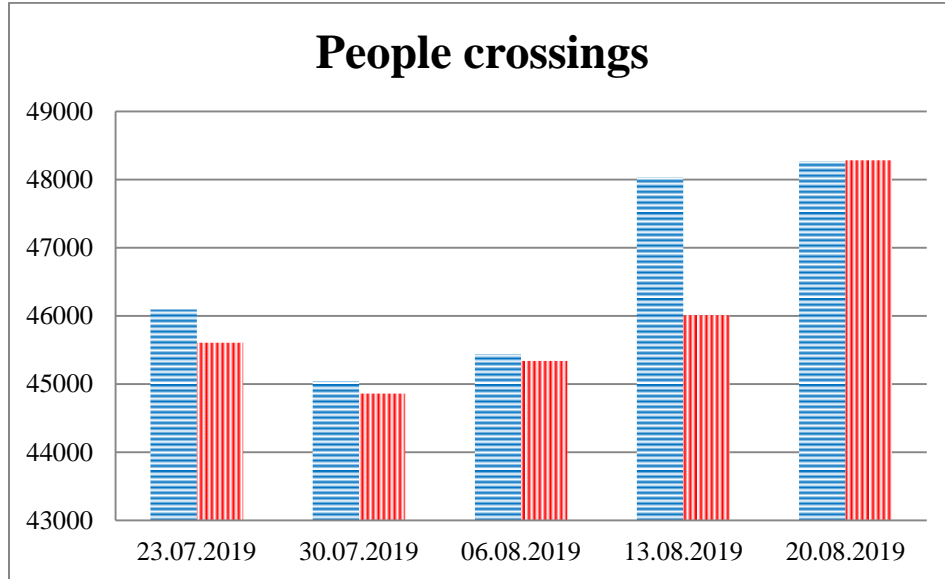


## TRENDS AND FIGURES AT A GLANCE

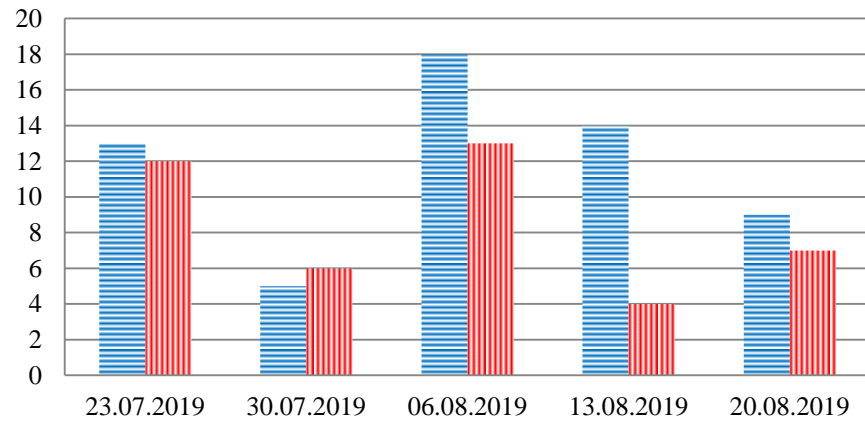
(For the period from 09:00 on 16 July to 09:00 on 20 August 2019)<sup>1</sup>

■ to the Russian Federation      ■ to Ukraine

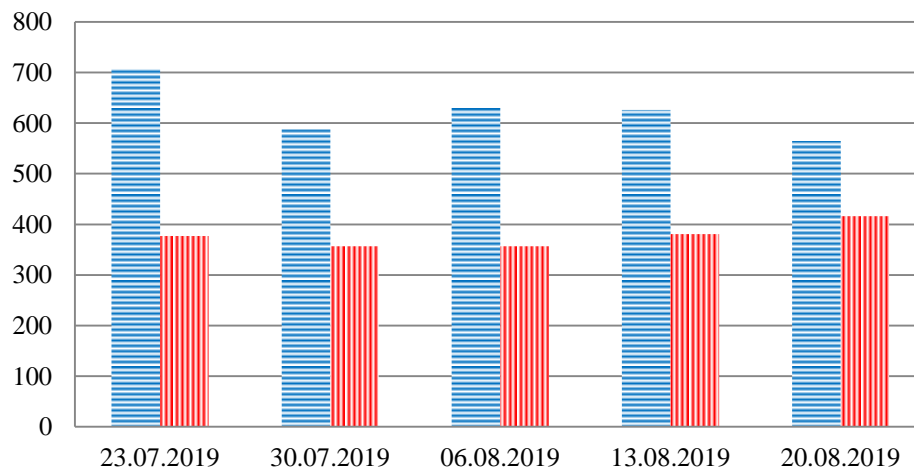


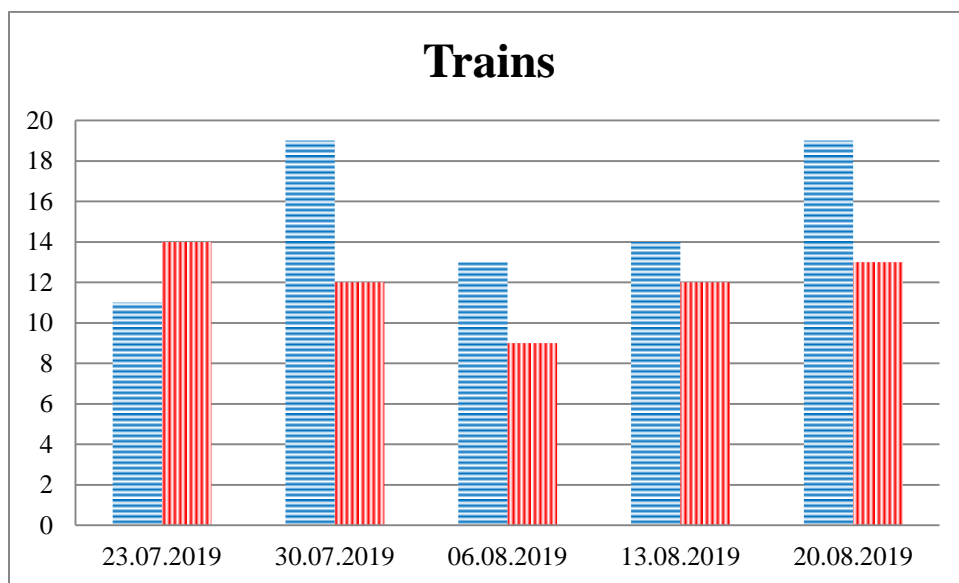
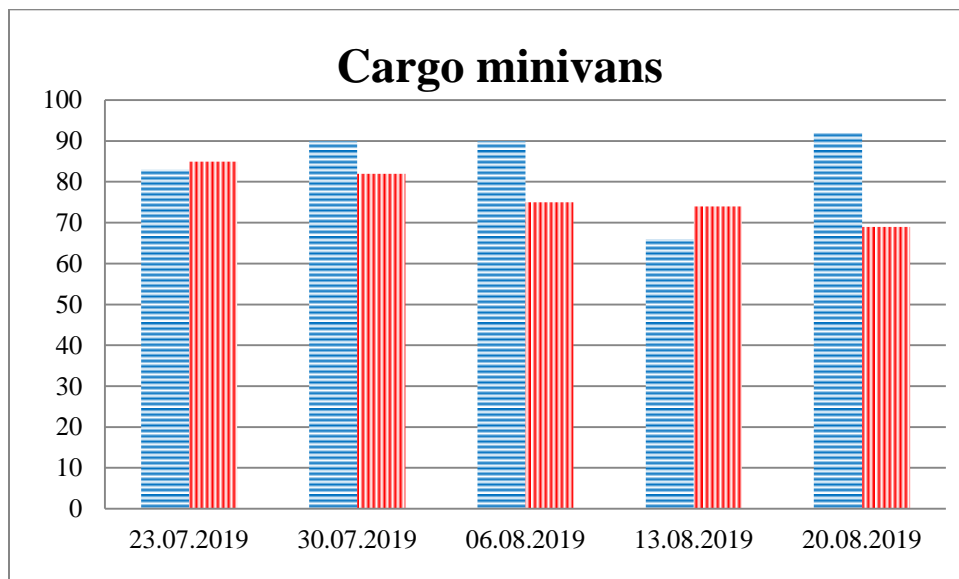
<sup>1</sup> The dates at the bottom of each graph refer to the day when the Weekly Reports were issued and include the observations made during the previous seven days.

### Families with a significant amount of luggage



### Trucks





\*\*\*

### Timetable of the trains heard at the Gukovo BCP

Date	To RF	To UA
13/08/2019		
14/08/2019	16:47 20:05 22:55 23:25	14:09 20:35
15/08/2019	16:12 21:45 04:38 06:47	21:52
16/08/2019	17:29 22:35 23:37	15:29 19:56 08:15
17/08/2019	16:58 01:13 05:12	23:30 03:20 07:36
18/08/2019	17:05 17:46 07:12	14:50 15:18 22:30
19/08/2019	12:08 16:38	
20/08/2019		04:00